

Electronic comfort for pure enjoyment...



*Instantaneous  
Water Heaters  
DHE  
DHC*

**STIEBEL ELTRON**

Comfort through Technology

# DHE Electronic Comfort – Constant Hot Water



## At a glance

- Fully electronic instantaneous water heater with LCD temperature display
- Temperature can be set accurately between 30 °C to 60 °C
- Electronic operational control saves energy (up to 20%) and water
- Temperature can be limited to 43 °C
- Constant temperature at several draw-off points at the same time
- Unlimited supplies of hot water
- Ideal for hard water areas
- Undersink or oversink installation
- Remote control from 1 or 2 locations is possible
- 2 presettable temperature memory buttons
- ECO setting to save water and energy
- Energy usage display

## The Ultimate in Water Heating Technology Temperature control at its very best

If you have ever experienced sudden changes in the water temperature in the shower or at the hair-dressers, you'll know how inconvenient and uncomfortable it can be. That won't happen any more when you use the DHE fully electronic instantaneous water heater from STIEBEL ELTRON. With this unit you can be sure that the water will always be at the temperature you have selected, even if hot or cold water is being drawn off at other outlets at the same time.

and so much more!

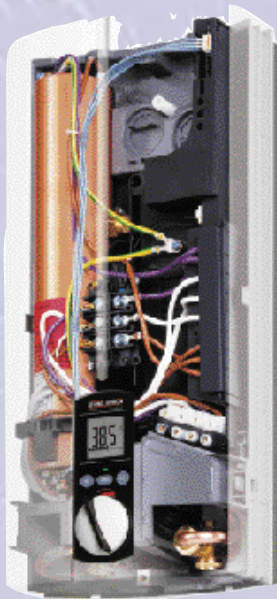
## Good Looking And Efficient

The sleek looks of a DHE electronic comfort appliance will not look out of place in any environment. The unit complies with the strictest safety standards and provided that local wiring regulations are complied with, can be installed almost anywhere.

An electronic instantaneous water heater will also save on running costs. Compared to conventional appliances, using a DHE electronic comfort water heater can save up to 20 % on energy costs, and also large amounts of water - and that's good for the environment. The specially designed bare-wire element is particularly suitable for hard water areas and ensures high efficiency as energy is turned into heat with very little loss.

## Easy To Control

Thanks to the unique temperature selection system (infinitely adjustable between 30 °C and 60 °C) of the DHE electronic comfort, you no longer need to spend time mixing hot and cold water. This means that no valuable water is wasted. If there are children or elderly people in the building, you can limit the maximum temperature to 43 °C and they won't be able to change it and get scalded. The temperature display tells you at a glance what temperature has been set.



## Total Flexibility

The DHE can be installed under the sink or over the sink. It even tucks away out of site with only the control panel on show. You can also have two remote control panels at different locations.

How much more flexibility do you need?



# DHC - Good-looking and efficient



## At a glance

- 9.6 kW heating element
- Pressurized unit for multipoint applications
- Fed direct from mains
- Can be sited almost anywhere

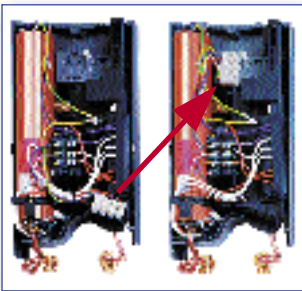
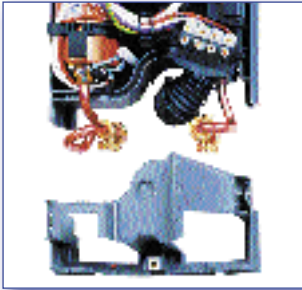
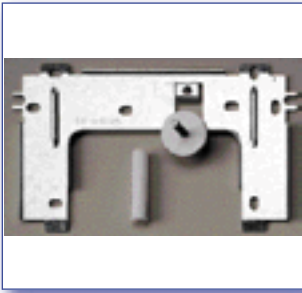
The DHC is a compact hydraulically controlled pressure-type instantaneous water heater. No venting is necessary, and because of its compact size it can be sited virtually anywhere.

The DHC can be used to feed more than one outlet, for example a shower and a hand basin or 2 hand basins. However it is recommended that if one outlet is a shower, the two outlets should not be used at the same time.

Powerful 9.6 kW elements form the heart of the unit giving enhanced flow rates and temperatures. Already a proven winner in the student accommodation market where rooms with a wash basin and shower are commonplace, the DHC will further enhance the already formidable reputation that STIEBEL ELTRON has in this sector, and open up new opportunities in both the domestic and commercial water heating market.

Compact and easy to install, the new DHC multipoint is the ideal solution for applications where space and money are at a premium.

# Instantaneous water heaters, electronically controlled



Type	DHE 18	DHE 21	DHE 24	DHE 27
Product code	07 3473 A	07 3474 A	07 3475 A	07 3476 A
Colour	white			
Nominal capacity	0,4			
Type of system	pressurized (closed)			
Permissible operating pressure	bar 10			
To supply				
one or more outlets	<input type="checkbox"/>	<input type="checkbox"/>	<input type="checkbox"/>	<input type="checkbox"/>
Siting				
Wall unit installed above sink	<input type="checkbox"/>	<input type="checkbox"/>	<input type="checkbox"/>	<input type="checkbox"/>
Wall unit installed below sink *	<input type="checkbox"/>	<input type="checkbox"/>	<input type="checkbox"/>	<input type="checkbox"/>
Dimensions				
Height	mm	470		
Width	mm	225		
Depth	mm	110		
Weight filled with water	kg	5,5		
Water connections	screw thread 1/2" BSP			
Ranges of calcium content of water				
low hardness/hard water <sup>1)</sup>	<input type="checkbox"/>	<input type="checkbox"/>	<input type="checkbox"/>	<input type="checkbox"/>
Features				
Temperature display	<input type="checkbox"/>			
Temperature selectable	variable between 30 and 60 °C			
Temperature lockable at	ca. 43 °C			
Electronically control	<input type="checkbox"/>			
Element type	bare-wire			
Hot water output				
with temperature increase from 10 °C to 38 °C l/min. (Mixed water)	<b>9,2</b>	<b>10,7</b>	<b>12,3</b>	<b>13,8</b>
Electrical connection <sup>2)</sup>				
	18 kW 3/PE ~ 400V	21 kW 3/PE ~ 400V	24 kW 3/PE ~ 400V	27 kW 3/PE ~ 400V
Approvals	VDE, CE, WRC			
Available from STIEBEL ELTRON				
Fittings for surface installation	KS			

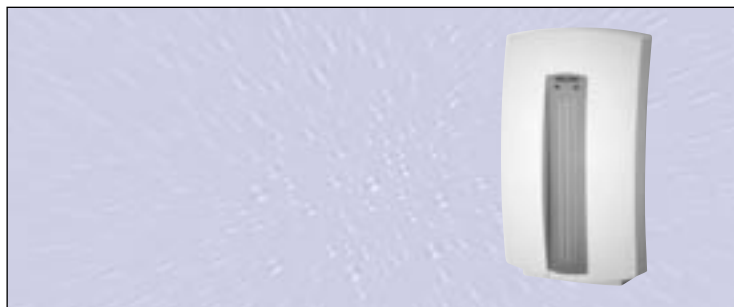
• Suitable for/comes complete with

1) Permissible ranges of calcium content of water; see installation manual

2) Regulations differ from one supply area to another; may only be connected by qualified person in accordance with I.E.E. Regulations

\* under-sink installation water connections at bottom of unit

# Instantaneous water heaters, hydraulically controlled



<b>Type</b>	<b>DHC 8</b>	
<b>Product code</b>	073481	
<b>Colour</b>	white	
<b>Nominal capacity</b>	l	0,5
<b>Type of system</b>	pressure-type	
<b>Permissible operating pressure</b>	bar	10
<b>To supply</b>	one or more outlets	
<b>Design</b>	<input type="checkbox"/> wall unit installed above sink <input type="checkbox"/> wall unit installed below sink *	
<b>Dimensions</b>		
height	mm	362
width	mm	200
depth	mm	105
<b>Weight filled with water</b>	kg	3,3
<b>Water connections</b>	screw connections	
		1/2" BSP
<b>Ranges of calcium content of water</b>	suitable for low hardness/hard water	
		• / -
<b>Features</b>	power selector switch	
		-
	control	
		hydraulic
	element type	
		metal sheathed
<b>Hot water output</b>	with temperature increase from	
		10 °C cold water to 38 °C hot water
	l/min.	4,2
<b>Electrical connection <sup>1)</sup></b>	9,6 kW	
	1/N/PE	~ 240V
<b>Available from STIEBEL ELTRON</b>	Shower fittings <sup>2)</sup>	
		KS

• Suitable for/comes complete with

<sup>1)</sup> Regulations differ from one supply area to another; may only be connected by qualified person in accordance with I.E.E. Regulations

<sup>2)</sup> The KS range of shower fittings are designed for optimum performance when used with DHC

\* water connections at bottom

## Guidelines for instantaneous water heater sizing

Application	Load per outlet Kw	Performance *
Spray tap	3,0	1,6 L/m at 37 °C
Bib tap	6,0	3,2 L/m at 37 °C
Shower	8,0	4,2 L/m at 37 °C
Hairdresser	8,0	4,2 L/m at 37 °C
Sink	12,0	4,3 L/m at 50 °C
Commercial sink	24,0	8,6 L/m at 50 °C
Bath	24,0	11,4 L/m at 40 °C

## Instantaneous flow chart \*

°C	Loading in Kw									
	4	6	8	12	18	21	24	45	60	90
40	1,9	2,9	3,8	5,7	8,6	10,0	11,4	21,4	28,6	42,9
45	1,6	2,5	3,3	4,9	7,4	8,6	9,8	18,4	24,5	36,8
50	1,4	2,1	2,9	4,3	6,4	7,5	8,6	16,1	21,5	32,2
55	1,3	1,9	2,5	3,8	5,7	6,7	7,6	14,3	19,1	28,6
60	1,1	1,7	2,3	3,4	5,1	6,0	6,9	12,9	17,2	25,7
	Flow rate L/m									

\*Assumes ambient cold water temperature of 10 °C

## Useful design formulae - Instantaneous

### Instantaneous

$$\text{Temp. rise } ^\circ\text{C} = \frac{\text{Kw loading} \times 14,3}{\text{Flow in Litres/min}}$$

$$\text{Flow in Litres/min} = \frac{\text{Kw loading} \times 14,3}{\text{Temp. rise } ^\circ\text{C}}$$