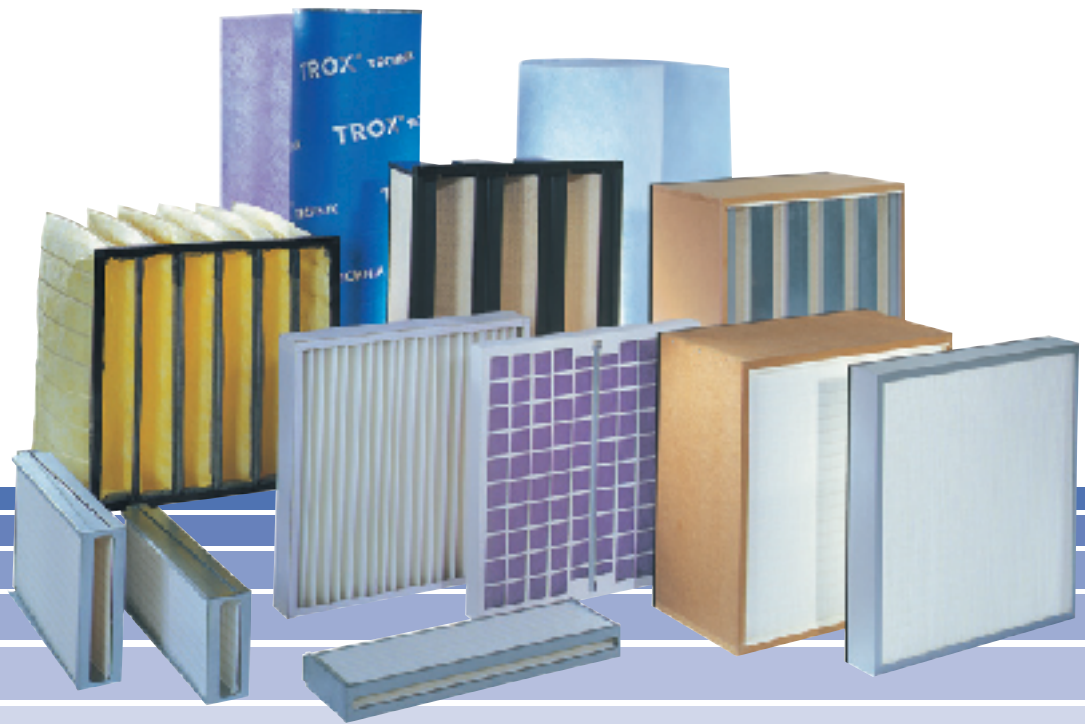


Filter Media



TROX[®] TECHNIK

Product Range

	Filter class to EN 779	Average Arrestance A_m in % Av. atm. dust spot eff. E_m in %	Product description	Filter type	Page	
Fine dust filters	G3	$80 \leq A_m < 90$	Roll Filter media	Trox-o-fil F702 and F721	3	
			Filter mats and panel filter	Trox-o-fil F702	3	
Filter mats and rolls			F703 and F704	4		
Bag filter inserts			F742	6		
G4	$90 \leq A_m$	Filter mats and rolls	F711	4		
		Z-line filter	F718	5		
Bag filter inserts		F743	6			
Coarse dust filters	F5	$40 \leq E_m < 60$	Filter mats and rolls	F706	4	
			Z-line filter	F719	5	
			Bag filter inserts	F745 and F744	6 / 7	
	F6	$60 \leq E_m < 80$	Bag filter inserts	F726 and F746	6 / 7	
			Compact fine dust filters	F736	8	
			Minipleat filter inserts	F756	9	
Minipleat filter cells			F756	11		
F7	$80 \leq E_m < 90$	Bag filter inserts	F728 and F748	6 / 7		
		Compact fine dust filters	F737	8		
		Minipleat filter inserts	F757	9		
		Minipleat filter cells	F757	11		
F8	$90 \leq E_m < 95$	Minipleat filter panels	F757	12		
		Bag filter inserts	F729 and F749	6 / 7		
		F9	$95 \leq E_m$	Compact fine dust filters	F739	8
				Minipleat filter inserts	F759	9
Minipleat filter elements	F759			10		
Minipleat filter cells	F759			11		
Minipleat filter panels	F759	12				

	Filter class to EN 1822	Extraction efficiency to EN 1822 in %	Product description	Filter type	Page
High efficiency terminal filters (HEPA and ULPA)	H10	> 85	Minipleat filter inserts	F779	9
	H11	> 95	Minipleat filter inserts	F780	9
			Minipleat filter elements	F780	10
			Minipleat filter cells	F780	11
			Minipleat filter panels	F780	12
			Particulate filter cells	F770	14
	H13	> 99.95	Minipleat filter inserts	F781	9
Minipleat filter elements			F781	10	
Minipleat circular filters			F781	10	
Minipleat filter cells			F781	11	
Minipleat filter panels			F781	12	
H14	> 99.995	Particulate filter cells	F771	14	
		Minipleat filter panels	F782	13	
U15	> 99.9995	Particulate filter cells	F772	14	
		Minipleat filter panels	F783	13	
U16	> 99.99995	Minipleat filter panels	F784	13	

			Product description	Filter type	Page
Activated carbon filters			Activ. carbon filter cartridges	F760	15
			Activated carbon panels	F760	16
			Activated carbon filter cells	F760	16

Roll Filter Media · Filter Mat, Panel Filters

Roll Filter Media

Filter Media Trox-o-fil F702 and F721 for filtering coarse and fine dust in ventilation and air conditioning systems.

Disposable filter media Trox-o-fil F702 consists of glass fibres and is wetted with a dust binding agent which increases the dust extraction efficiency and prevents dust carry over, the dust being collected throughout the entire depth of the media.

Filter media F721 consists of chemical fibres, unwetted. The special structure guarantees a high dust holding capacity with a low pressure differential increase.

Available in cassettes for all Trox-o-mat roll filters, and on cardboard tubes or steel spools to match other manufacturers products.

The dimensions correspond to the equipment width; filter roll length >20 m. Order numbers and prices are contained in our price list for Replacement Filter Media.



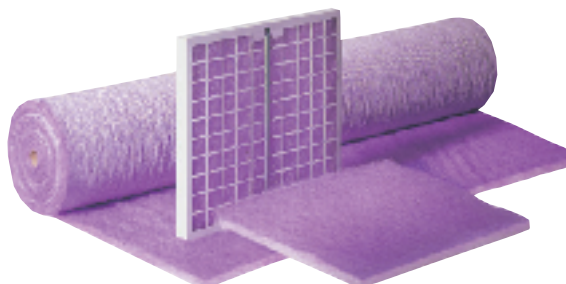
Filter Mats and Panel Filters

Trox-o-fil F702, is supplied as a roll, cut into mats or panel filters and is used for the extract coarse of fine dust particles in room air-conditioning systems.

The disposable glass fibre media has a flexible fibre structure coated with a dust binding agent which increases the dust extraction efficiency and prevents dust carry over, the dust being collected throughout the entire depth of the media.

Available on rolls, as filter mats and filter cells. Rolls available on cardboard cores in standard and special sizes. Filter cells available in standard or non-standard sizes with perforated sheets both sides and U-shape cardboard frame.

Order numbers and prices are contained in our price list for Replacement Filter Media.



Filter Media	Trox-o-fil F702	F721
Filter grade to EN 779 ¹⁾	G3	G3
Average Arrestance against synthetic dust	86	86
in %		
Nominal face velocity	3.1	2.5
in m/s		
Initial pressure differential at nominal flow velocity	80	80
in Pa		
Temperature resistance	up to +100	up to +100
in °C		

¹⁾EN 779: particle air filters for general room air-conditioning technology. See leaflet F0/2/EN/.

Filter media	Trox-o-fil F702
Filter grade to EN 779 ¹⁾	G3
Average Arrestance against synthetic dust	86
in %	
Nominal face velocity	2.5
in m/s	
Initial pressure differential at nominal flow velocity	60
in Pa	
Temperature resistance	up to +100
in °C	

¹⁾EN 779: particle air filters for general room air-conditioning technology. See leaflet F0/2/EN/.

Filter Mats and Rolls

Filter Media F 703, F 704 (limited regeneration) and F 711 (regenerative)

For use in air handling units and panel air filter assemblies in ventilation and air conditioning systems.

The filter media consists of random synthetic fibres with a plastic binding agent, which guarantees a high dust holding capacity with low pressure differential increase.

Available in rolls and filter mats in standard and special sizes.

Filter media F 703 and F 704 can be used as economic disposable type filters.

Order numbers and prices are contained in our price list for Replacement Filter Media.

Fine Dust Filter Media F 706

for air conditioning systems with high filtration requirements.

The filter media consists of random synthetic fibres. Manufacture of fine high density fibres provides a high dust extraction efficiency.

Available in rolls and filter mats in standard and special sizes.

Order numbers and prices are contained in our price list for Replacement Filter Media.



Filter Media	F 703	F 704	F 711
Filter grade to EN 779 ¹⁾	G3	G3	G4
Average Arrestance against synthetic dust in %	82	86	90
Nominal face velocity in m/s	1.5	1.5	1.5
Initial pressure differential at nominal flow velocity in Pa	30	40	50
Temperature resistance in °C	up to + 100		

¹⁾EN 779: particle air filters for general room air-conditioning technology. See leaflet F0/2/EN/.

Filter Media	F 706
Filter grade to EN 779 ¹⁾	F5
Average Arrestance against synthetic dust in %	96
Average efficiency against atmospheric dust in %	47
Nominal face velocity in m/s	0.9
Initial pressure differential at nominal flow velocity in Pa	90
Temperature resistance in °C	up to +100

¹⁾EN 779: particle air filters for general room air-conditioning technology. See leaflet F0/2/EN/.

Z-Line filters

Z-Line Filters

Z-line filters are used as pre- or main filters in room air conditioning systems to extract fine and coarse dust particles. They are supplied in various filter classes and filter sizes. The casing depths and installed cross sections conform to standard dimensions.

They are assembled in Trox standard cell frames for wall and duct assembly and are suitable as replacements in the filter systems of other manufacturers.

The special characteristics of the Z-line filter system are:

- High dust holding capacity at low pressure differential
- Long service life and long periods between maintenance
- Quick and easy fitting and removal
- Light weight and low volume transportation
- Low in harmful substances for safe and easy disposal in company refuse incineration plant.

The Z-line filter comprises a strong damp-resistant cardboard casing and pleated filter medium of progressively constructed thermally bonded synthetic non-woven fibre. The pleated filter medium has a large effective area and allows the dust to penetrate deep into the folds, to give high dust-holding capacity at low air resistance and a long filter service life.



Z-line filter	F 718	F 719
Filter class to EN 779 ¹⁾	G4	F5
Average efficiency against synthetic dust approx. in %	91	> 98
Average efficiency against atmospheric dust approx. in %	30	45
Initial pressure differential at nominal volume flow in Pa	70	90
Temperature resistance in °C	up to + 80	up to + 80
Maximum relative humidity in %	100	100

¹⁾EN 779: particle air filters for general room air-conditioning technology. See leaflet F0/2/EN/.

Bag Filter Inserts – Chemical Fibre

Bag Filter Inserts

Depending on the filter type, bag filters are used as pre- or main filters in room air conditioning systems to extract fine and coarse dust particles. To ensure that they meet requirements they are supplied in a range of extraction and efficiency grades and in different lengths. The filters comprise a plastic front header (metal header on request) and individual bag filters of chemical- or synthetic non-woven fibres with spun-bonded coating.

Available in standard header dimensions:

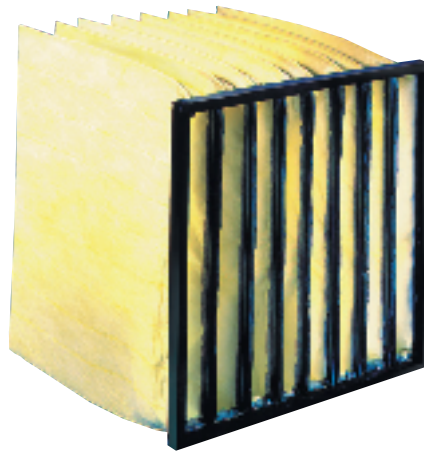
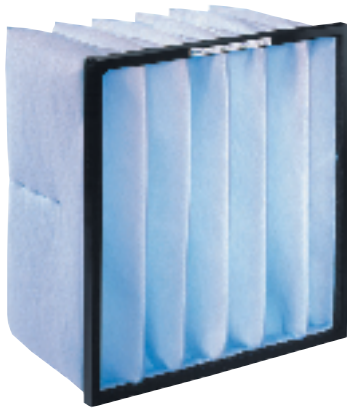
592 x 592 mm for cell frame 610 x 610 mm
 490 x 592 mm for cell frame 508 x 610 mm
 287 x 592 mm for cell frame 305 x 610 mm
 592 x 287 mm for cell frame 610 x 305 mm
 287 x 287 mm for cell frame 305 x 305 mm

See table for bag filter length.

Order numbers and prices are in our price list for Replacement Filter Media (see leaflet F7/2.1/EN/).

In addition to the above standard sizes, filter inserts are available in any special dimensions, described as Variable Bag Filters.

Technical data and prices on request.



Bag Filter Insert	F 742	F 743	F 745	F 726	F 728	F 729
Filter grade to EN 779 ¹⁾	G 3	G 4	F 5	F 6	F 7	F 8
Average Arrestance against synthetic dust approx. in %	82	90	96	> 98	> 98	> 98
Bag filter length in mm	360	360	650	600	600	600
Initial pressure differential at nominal volume flow ²⁾ in Pa	25/35	35/50	70/100	45/60	55/75	90/115
Temperature resistance in °C	up to + 90			up to + 70		

¹⁾ EN 779: particle air filters for general room air-conditioning technology. See leaflet F0/2/EN/.

²⁾ For nominal volume flow for filter size concerned, see leaflet F7/2.1/EN/.

Bag Filter Inserts – Glass Fibre

Bag Filter Inserts

Bag filter inserts are used as pre- or main filters in room air-conditioning systems to extract fine dust particles.

To ensure that they meet requirements they are supplied in a range of extraction and efficiency grades and in different lengths.

The filters comprise a plastic front header (metal header on request) and individual bag filters of high-grade glass fibre with spunbonded coating.

Available in standard header dimensions:

592 x 592 mm for cell frame 610 x 610 mm

490 x 592 mm for cell frame 508 x 610 mm

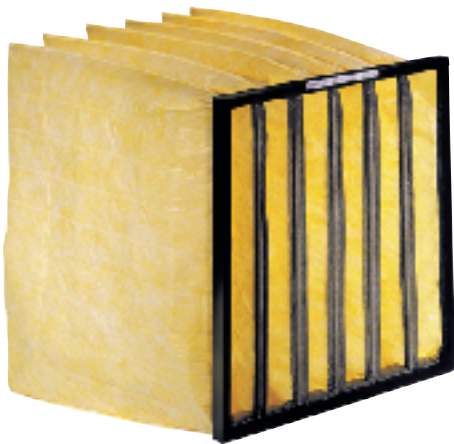
287 x 592 mm for cell frame 305 x 610 mm

592 x 287 mm for cell frame 610 x 305 mm

287 x 287 mm for cell frame 305 x 305 mm

See table for bag filter length.

Order numbers and prices are contained in our price list for Replacement Filter Media (see leaflet F7/2/EN/).



Bag Filter Insert	F 744	F 746	F 748	F 749
Filter grade to EN 779 ¹⁾	F 5	F 6	F 7	F 8
Average Arrestance against synthetic dust approx. in %	98	>98	>98	>98
Average efficiency against atmospheric dust approx. in %	55	65	85	95
Bag filter length in mm	600 700	600 700	600 700	600 700
Initial pressure differential at nominal volume flow ²⁾ in Pa	50/70 50/70	80/110 80/110	100/130 80/110	140/190 120/160
Temperature resistance in °C	up to +90			

¹⁾ EN 779: particle air filters for general room air-conditioning technology. See leaflet F0/2/EN/.

²⁾ For nominal volume flow for filter size concerned, see leaflet F7/2/EN/.

Compact Fine Dust Filters

Compact Fine Dust Filters for Gas Turbines

Compact Fine Dust Filters are heavy duty filters for use in ventilation systems with high efficiency requirements, even under extreme operating conditions such as those found in gas turbines, centrifugal compressors, and similar equipment. The filters are designed for high suction performance and are unaffected by intermittent volume flows and severe pressure fluctuations. They can be mounted in Trox's standard cell frames or used as spares in any standard mounting frame.

Available in various options:

- with 65 % and 95 % efficiency to EN779
- with two nominal volume flows of 940 l/s (3400 m³/h) or 1180 l/s (4250 m³/h) per filter insert measuring 592 x 592 x 292 mm,
- with a single or double header flange.

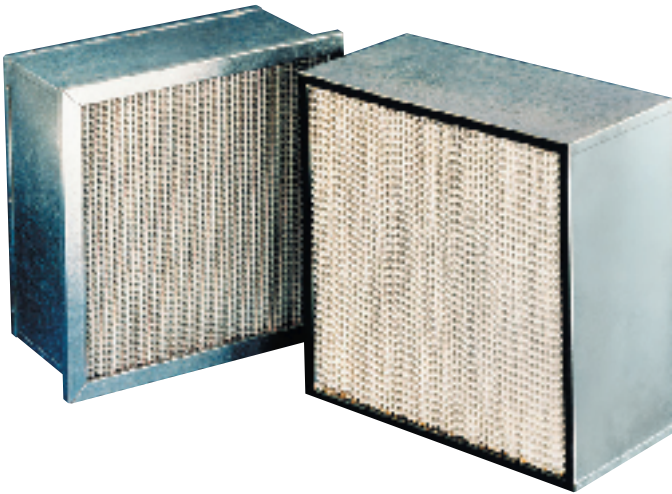
The compact filters comprise a strong galvanized casing into which the filter pack is inserted as an airtight assembly. Protective grilles on both sides prevent the filter assembly from moving and protect the filter media from damage.

Compact Fine Dust Filters for Ventilation and Air Conditioning Systems

These are used as pre-filters and main filters where high and/or variable volume flows are required with long filter life. Typical areas of application comprise electronics and computer rooms, pharmaceutical production areas, research laboratories, hospitals, industrial ventilation systems and pre-filtration for particulate filters. Depending on the design, they are used in standard Trox frames or support systems for particulate filter cells. They can be used as replacement filters in all conventional support frames.

Compact filters are available in various frame designs, sizes and efficiency levels (65 %, 85 % and 95 % to EN 779) as required.

Order numbers and prices are contained in our price list for Replacement Filter Media.



Compact Fine Dust Filters	F736 ¹⁾ for gas turbines		F736, F737, F739 for ventilation and AC systems		
	F6	F9	F6	F7	F9
Filter class to EN 779 ²⁾	F6	F9	F6	F7	F9
Average efficiency against atmospheric dust in %	65	95	65	85	95
Initial pressure difference at nominal volume flow ³⁾ in Pa	130/170	180/220	85	110	130
Temperature resistance in °C	up to + 120		up to + 120		
Max. relative humidity in %	100		100		

¹⁾ Fine dust compact filter with double-layer micro-glass fibre paper.

²⁾ EN 779: particle air filters for general room air-conditioning technology. See leaflet F0/2/EN/.

³⁾ Nominal volume flows for each filter size are given in leaflets F7/3.1/EN/ and F7/3.2/EN/.

Minipleat Filter Inserts

Minipleat Filter Inserts

Used as pre-filters and main filters in ventilation and air-conditioning systems which require high volume flows and extended filter life. Special features are the co-ordination of filter size, rated volume flow, pressure differential, dust holding capacity and service life.

Available in filter class F6-F9 to EN779 and H10, H11 and H13 to EN1822.

Various classes of filter media are used to achieve the required separation levels:

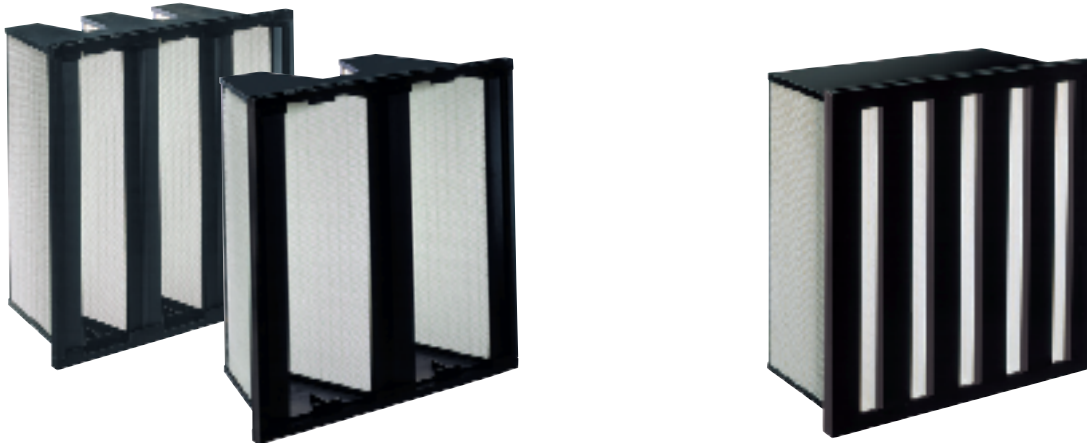
- cellulose paper for filter classes F6 to EN779
- glass fibre paper for filter classes F7 and F9 to EN779 and H10, H11 and H13 to EN1822.

Minipleat filter inserts are available in the following sizes:

- B x H x T
- 592 x 287 x 292 mm
 - 592 x 490 x 292 mm
 - 592 x 592 x 292 mm

The casing is made of plastic or stove enamelled galvanized sheet steel.

For order numbers and prices, refer to section 7 of our price list (see also leaflet F7/4.1/EN/).



Minipleat Filter Inserts	F756	F757	F759	F779	F780	F781
Filter class to EN 779 ¹⁾	F6	F7	F9	-	-	-
Filter class to EN 1822 ²⁾	-	-	-	H10	H11	H13
Average efficiency against atmospheric dust	in %	65	85	95	-	-
Extraction eff. to EN 1822	in %	-	-	-	> 85	> 95
Initial pressure differential at nominal volume flow ³⁾	in Pa	120	140	180	160	160
Temperature resistance	in °C		up to +80		up to +100	265

¹⁾ EN 779: particle air filters for general room air-conditioning technology.

See leaflet F0/2/EN/.

²⁾ EN 1822: "Particulate Filter (HEPA and ULPA)".

³⁾ For nominal volume flow for filter size concerned, see leaflet F7/4.1/EN/.

Minipleat filter elements · Circular minipleat filters

Minipleat filter elements

Minipleat filter elements are used as pre- and main filters in air-conditioning systems requiring high volume flows and long filter service life. Their dimensions enable them to be fitted into the cross sections and casing depths of existing systems.

Depending on the filter element they are made for extremely small casing depths or small cross sections. Different filter media are used, depending on the filter class

- Cellulose paper for filter class F9 to EN 779
- Glass fibre paper for filter class H11 and H13 to EN 1822.

Minipleat filter elements are supplied in three sizes (BxHxT):

- 600 x 65 x 202 mm (for extremely small casing depths)
- 86.5 x 303 x 600 mm (for high volume flows and
- 86.5 x 202 x 600 mm and small cross sections).

A galvanized sheet steel casing is used for the standard construction. As a special construction, filter elements in other casing depths and filter casings of aluminium or stainless sheet steel are supplied.



Circular minipleat filters

Circular minipleat filters are used to extract suspended particles, e.g. aerosols, toxic dust, viruses, germs etc. from the supply air or extract air of air-conditioning systems. They are used in many areas of industry, research, medicine, pharmacy and nuclear technology.

The circular filter is compact and cylindrical in construction. High-grade glass fibre paper is used as the filter medium, the construction and composition of which meets the stipulated temperature and humidity requirements. All metal components are manufactured in aluminium. To ensure airtight sealing between the filter and the holding frame the circular filters are provided with a flat profile gasket.

The filters are supplied as standard in two different sizes; further sizes and other constructions are available on request.



Minipleat filter elements	F759	F780	F781
Filter class to EN 779 ¹⁾	F9	–	–
Filter class to EN 1822 ²⁾	–	H11	H13
Average efficiency against atmospheric dust	in %	95	–
Extraction efficiency to EN 1822	in %	–	> 95
Initial pressure differential at nominal volume flow ³⁾	in Pa	50/120	140/190
Temperature resistance	in °C	up to + 80	

¹⁾ EN 779: particle air filters for general room air-conditioning technology. See leaflet F0/2/EN/.

²⁾ EN 1822: "Particulate Filter (HEPA and ULPA)".

³⁾ For nominal volume flow for filter size concerned, see leaflet F7/4.2/EN/.

Circular minipleat filter	F781
Filter class to EN 1822 ¹⁾	H13
Extraction eff. to EN 1822	in% > 99.95
Initial pressure differential at rated volume flow ²⁾	in Pa 150
Rec. final pressure differential	in Pa 400
Temperature resistance	in °C up to + 80

¹⁾ EN 1822: High efficiency terminal filters (HEPA and ULPA)

²⁾ The rated volume flows for the respective filter sizes can be found in Product Information PI/F7/4.5/EN/.

Minipleat Filter Cells

Minipleat Filter Cells

Minipleat filter cells are used as pre-filters to extract fine dust particles, or as high performance filters to extract suspended particles, e.g. aerosols, toxic dust, viruses, germs, etc. from the supply and extract air.

The special features of the filter cells are the co-ordination of the filter size, rated volume flow, pressure differential, dust holding capacity and service life.

They are designed for high volume flow and long service life.

Minipleat Filter Cells are available in filter class F6 to F9 to EN 779 and H11 to H13 to EN 1822.

The filter media used is high quality cellulose or glass fibre paper with various dust extraction or penetration efficiencies. Due to its structure and composition the media is temperature and moisture resistant.

The filter media is folded into closely-spaced shallow pleats, with textile threads to provide a uniform spacing of the pleats giving an optimum pleating geometry, thus ensuring a filter of high stability.

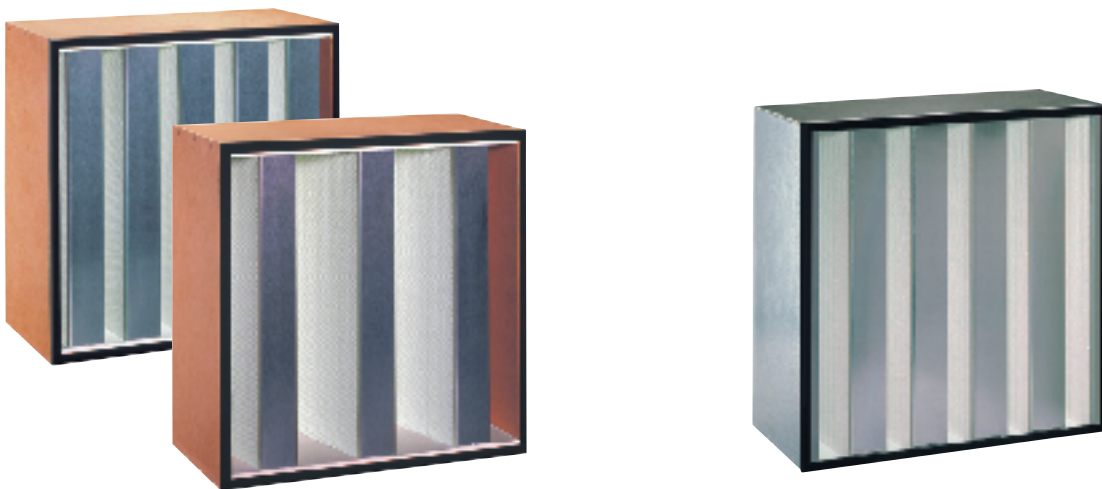
Minipleat Filter Cells are 292 mm deep with three different intake cross sections:

- B x H
- 305 x 610 mm
 - 610 x 610 mm
 - 762 x 610 mm

The filter cells can be combined to form a composite filter for any total volume flow.

Depending on application and requirement for filter cells, casings are available in different materials: chipboard, galvanized sheet steel or stainless steel.

For order number and prices, refer to section 7 of our price list (see also leaflet F7/4.3/EN/).



Minipleat Filter Cells	F 756	F 757	F 759	F 780	F 781
Filter class to EN 779 ¹⁾	F6	F7	F9	–	–
Filter class to EN 1822 ²⁾	–	–	–	H11	H13
Average efficiency against atmospheric dust	in %	65	85	95	–
Extraction efficiency to EN 1822	in %	–	–	>95	>99.95
Initial pressure differential at nominal volume flow ³⁾	in Pa	120	140	180	125
Temperature resistance	in °C	up to +80			

¹⁾EN 779: particle air filters for general room air-conditioning technology. See leaflet F0/2/EN/.

²⁾EN 1822: "Particulate Filter (HEPA and ULPA)".

³⁾For nominal volume flow for filter size concerned, see leaflet F7/4.3/EN/.

Minipleat filter panels

Minipleat filter panels

Minipleat filter panels are used as pre-filters to extract fine dust or as high performance filters to extract suspended particles, e.g. aerosols, toxic dust, viruses, germs, etc. from the supply and extract air. Minipleat filter panels are supplied in filter classes F7 and F9 in accordance with EN 779 as well as H11 and H13 to EN 1822.

High grade glass fibre paper is used with various degrees of dust extraction efficiency, the construction and composition of which meets the stipulated temperature and humidity requirements.

The glass fibre paper is folded into narrow pleats, with thermoplastic adhesive spacers to ensure even spacing between the pleats.

Depending on the area of application and requirements, the minipleat filter panels are supplied in various constructions and dimensions.

Minipleat filter panels F757 and F759

– 60 mm casing depth, fibreboard filter casing (MDF) with flange (for assembly in Trox standard cell frame)

– 60 mm casing depth, fibreboard (MDF) filter casing with flat profile gasket.

Minipleat filter panels F780 and F781

- 30 mm casing depth, extruded aluminium filter casing with flat profile gasket and protective grid on one side
- 78 mm casing depth, filter casing of fibreboard (MDF), or extruded aluminium with flat profile gasket
- 150 mm casing depth, filter casing of fibreboard (MDF), galvanized sheet steel or stainless steel with flat profile gasket
- 292 mm casing depth, filter casing of fibreboard (MDF), galvanized sheet steel or stainless steel with flat profile gasket
- 91 mm casing depth, extruded aluminium filter casing with fluid seal

Order numbers and prices can be found in our price list for replacement filter media (see also leaflet F7/4.4/EN/.).



Minipleat filter panels	F757	F759	F780	F781
Filter class to EN 779 ¹⁾	F7	F9	–	–
Filter class to EN 1822 ²⁾	–	–	H11	H13
Average efficiency against atmospheric dust	in %	85	95	–
Extraction efficiency to EN 1822	in %	–	–	> 95
Initial pressure differential at nominal volume flow ³⁾	in Pa	140	180	125
Temperature resistance	in °C	up to + 80		

¹⁾ EN 779: particle air filters for general room air-conditioning technology. See leaflet F0/2/EN/.

²⁾ EN 1822: "Particulate Filter (HEPA and ULPA)".

³⁾ For nominal volume flow for filter size concerned, see leaflet F7/4.4/EN/.

Minipleat filter panels for clean room technology

Minipleat filter panels

meet the highest standards of air purity and germ-free environment in many sensitive areas of modern technology, pharmacy and medicine. They are used for terminal filter applications in ceilings, filter banks, clean workbenches and in air diffusers, where both high standards of cleanliness and controlled air flow are required, e.g. low turbulence displacement ventilation (laminar flow).

High grade glass fibre paper with various degrees of dust extraction efficiency is used as the filter media.

The glass fibre paper is folded into narrow pleats, with thermoplastic adhesive spacers to ensure even spacing between the pleats.

The minipleat filter panels are supplied in filter classes H14 to U16 in accordance with EN 1822 and in various constructions, with or without protective grid, or with gasket both sides, fluid seal or knife-edge blade profile, to match the ceiling system or mounting frame.

The special features of the minipleat filter panels are:

- Optimum pleating geometry
- Low initial differential pressure at high extraction efficiency
- Stable air flow on clean air side

Depending on the area of application and requirements the minipleat filter panels are supplied in different constructions and dimensions:

Extruded aluminium filter casing with continuous sealing:

- 69 mm casing depth
- 78 mm casing depth
- 90 mm casing depth

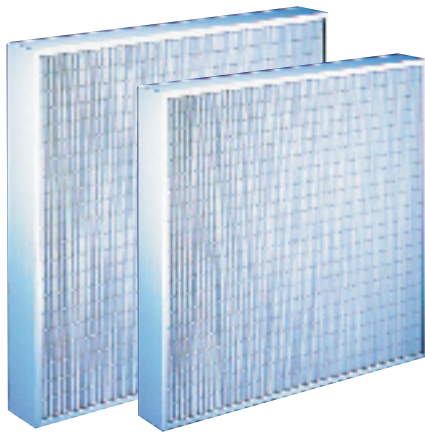
Extruded aluminium filter casing with fluid seal:

- 105 mm casing depth

Extruded aluminium filter casing with knife-edge blade profile:

- 109 mm casing depth

Order numbers and prices can be found in our price list for replacement filter media (see also leaflet F7/5/EN/).



Minipleat filter panels	F 782	F 783	F 784
Filter class to EN 1822 ¹⁾	H14	U15	U16
Extraction efficiency to EN 1822 in %	> 99.995	> 99.9995	> 99.99995
Nominal face velocity in m/s	0,45	0,45	0,45
Initial pressure differential at rated volume flow ²⁾ in Pa	85/95/110	100/115/130	120/140
Temperature resistance in °C		up to + 80	

¹⁾EN 1822: High efficiency terminal filters (HEPA and ULPA)

²⁾Nominal volume flow for a particular filter size can be found in leaflet F7/5/EN/.

Particulate Filter Cells

Particulate Filter Cells

Used as high efficiency filters for separating sub-micron particles or aerosols, toxic dust, viruses, bacteria etc. from the supply or extract air in many fields of application, with highest standards of air purity, for example industry, research, medicine, pharmacy and nuclear science, where a high degree of air purity and freedom from bacteria is required.

The filter media used is high quality glass fibre paper with various dust extraction or penetration efficiencies. Due to its structure and composition the media is temperature and moisture resistant.

The filter paper is located in the filter casing in close parallel pleats, and is evenly and accurately positioned by corrugated aluminium spacers.

Particulate filter cells are available in three installation depths:

- 78 mm
- 150 mm
- 292 mm

and all standard dimensions.

Standard casing material is particle board which is specially treated for moisture resistance, is highly stable and virtually impermeable to air.

Alternative casing constructions are available in aluminium, galvanized or stainless steel.

For order numbers and prices, refer to section 7 of price list (see also leaflet F7/3.3/EN/).



Particulate Filter Cells	F770	F771	F772
Filter class to EN 1822 ¹⁾	H11	H13	H14
Extraction efficiency to EN 1822 in %	>95	>99.95	>99.995
Initial pressure difference at nominal volume flow ²⁾ in Pa	125	250	125
Temperature resistance in °C		up to +100	

¹⁾ EN 1822: "Particulate Filter (HEPA and ULPA)".

²⁾ For nominal volume flow for filter size concerned, see leaflet F7/3.3/EN/.

Activated Carbon Filter Cartridges

Activated Carbon Filter Cartridges

Activated carbon filters are used to extract gaseous air pollution from the recirculated- and supply air of room air-conditioning systems.

Depending on requirements or structural conditions the cartridge filters are supplied in two different lengths and are especially suitable for retrofitting in existing air-conditioning systems.

They are assembled in walls and ducts using clamping frames.

The filter cartridge comprises an internal and external plastic cylinder, flanged top and bottom plate and activated carbon in the form of small sticks. To ensure a tight seal between the filter cartridge and the holding plate it is equipped with a flat profile gasket.

Further sizes and constructions are available on request.



Filter type		F 760	
Rated volume flow	in l/s	28	55
	in m ³ /h	100	200
Pressure differential at rated volume flow	in Pa	100	175
Activated carbon volume	in l	2.2	4,0
Coating thickness	in mm	26	26
Contact time	in s	0.08	0.07
B.E.T. surface	in m ² /g	1000	1000
External diameter	in mm	145	145
Length	in mm	250	450
Rec. operating temperature	in °C	< 50	
Rec. relative humidity	in %	70	

Activated Carbon Filters

Activated carbon filters are used for wall and duct installation in ventilation and air conditioning systems to adsorb gaseous odours and toxic substances (e.g. body odours, food odours, smoke and fumes) from the ambient air, and hydrocarbons, traces of inorganic compounds etc. from the air entering supply systems.

Efficient pre-filtration of minimum F6 is strongly recommended in order not to impair the efficiency of the activated carbon with other air pollutants.

When using activated carbon filters, the following operational limits should be observed:

- temperature 40 °C, to avoid desorption
- relative humidity approx. 70 % as, with the possibility of water vapour in the carbon a reduction of adsorption capacity can occur.

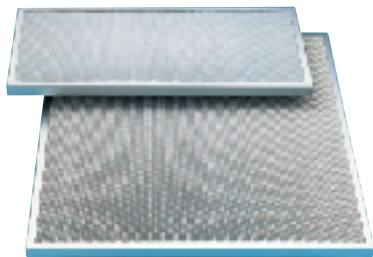
Activated carbon filter cells with other types of carbon for special applications or operating conditions, e.g. adsorption of sulphur or chlorine compounds, are available on request.

Activated Carbon Filter Panels

The activated carbon filter panels are manufactured from a formed galvanized steel casing with galvanized expanded metal mesh on both sides.

The filter panels are available in two sizes:

- 600 x 300 x 25 mm
- 600 x 680 x 25 mm

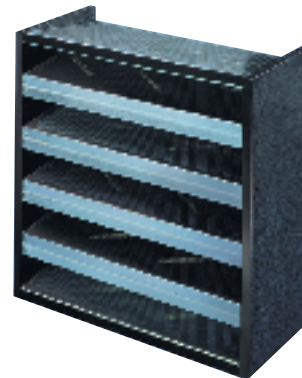


Activated Carbon Filter Cells

The filter cells are manufactured from moisture-resistant particle board with neoprene seal. The carbon panels are tapered and securely fixed to provide a “wedge” formation.

The filter cells are available in size:

- 610 x 610 x 292 mm



Activated Carbon Filter Panels		F760 J01 / J02
Dimensions W x H x D for J01 for J02	in mm in mm	600 x 300 x 25 600 x 680 x 25
Pore volume (Pores > 1000 Å or 100 nm)	in cm ³ /g carbon	0.50
Total internal pore surface to B.E.T	in m ² /g carbon	approx. 1000
Apparent density (dry)	in g/l carbon	approx. 430
Activity: tetrachloromethane CCL4	in g/100 g carbon	approx. 62.5
Water content	in %	approx. 2

Activated Carbon Filter Cells		F760 J03
Nominal volume flow	in l/s (m ³ /h)	560 (2000)
Pressure differential at nominal volume flow	in Pa	65
Dimensions W x H x D	in mm	610 x 610 x 292
Pore volumes (pores > 1000 Å or 100 nm)	in cm ³ /g carbon	0.50
Total internal pore surface to B.E.T	in m ² /g carbon	approx. 1000
Apparent density (dry)	in g/l carbon	approx. 430
Activity: tetrachloromethane CCL4	in g/100 g carbon	approx. 62.5
Water content	in %	approx. 2