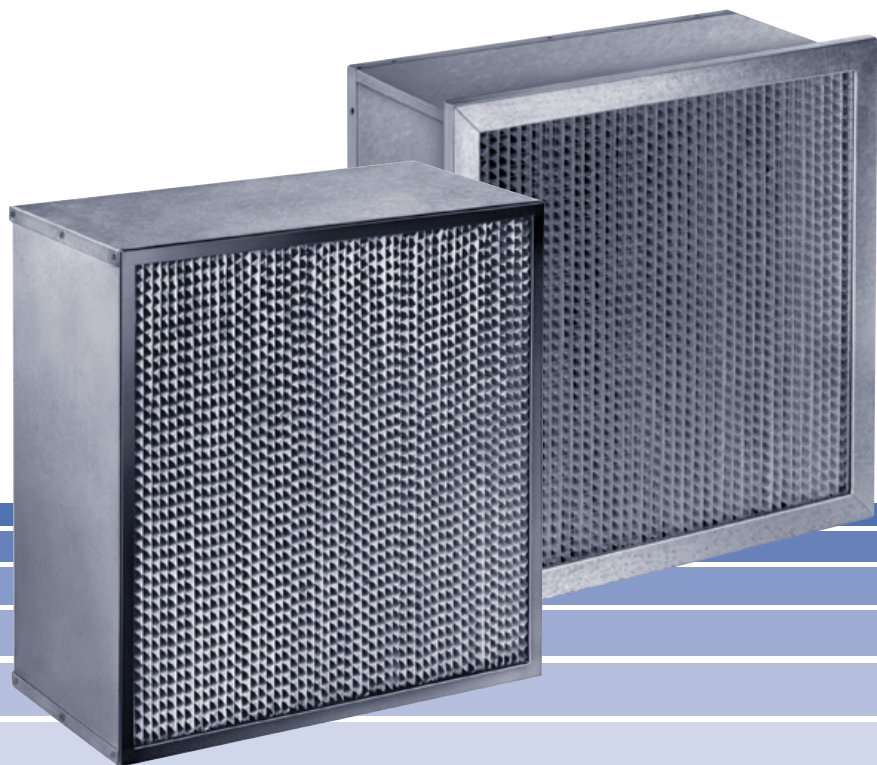


# Compact Fine Dust Filter

at 65 %, 85 %, 95% Efficiency

to EN 779 (ASHRAE STANDARD 52-76)



**TROX<sup>®</sup>** **TECHNIK**

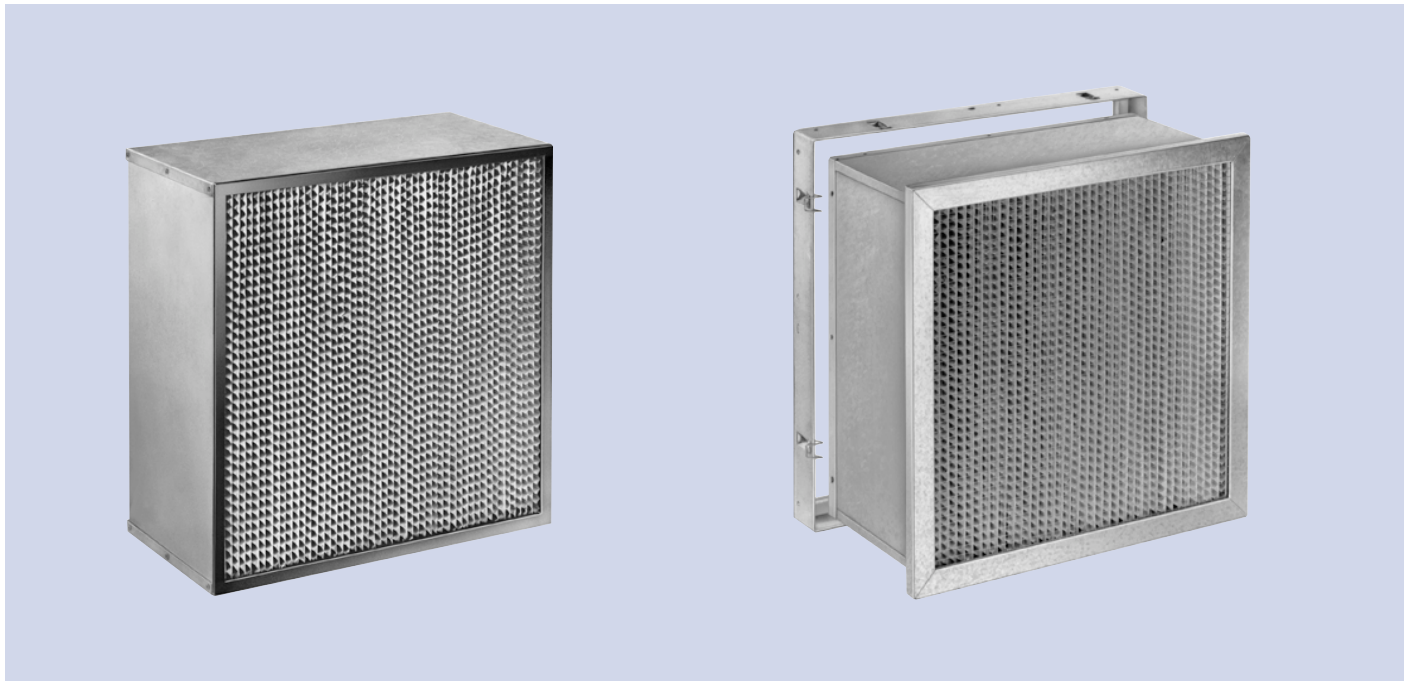
# Contents · Description

---

Description	2
Filter Media Data	3
Order Details	4

## Compact Fine Dust Filter (as a filter cell)

## Compact Fine Dust Filter (as a filter insert) Shown with Trox's standard cell frame



Compact Fine Dust Filters are used as pre-filters and main filters in ventilation and air-conditioning systems requiring high and/or variable volume flows combined with long filter life. Typical areas of application include electronic and computer rooms, pharmaceutical production areas, research laboratories, hospitals, industrial ventilation and pre-filtering of airborne particles. Depending on the specification, they may be used in Trox's standard cell frames or in mounting bank systems for airborne particulate filter cells. They can be used as spares in any standard mounting frame.

Compact filters come with various degrees of Efficiency at 65 %, 85 % and 95 % to EN 779<sup>1)</sup> depending on requirements.

The consists of a rigid framework structure in which the filter pack is inserted as an air-tight assembly.

<sup>1)</sup>EN 779: "Particle air filters for general ventilation and air conditioning purposes".  
(Equivalent to ASHRAE STANDARD 52-76)  
See leaflet "Air Filter Test"

# Filter Media Data

## Filter Media / Spacers

The optimum use of filter media is an essential prerequisite to achieving the required filtering properties, such as low pressure differentials, high levels of separation and efficiency, a large dust holding capacity and long filter life. For this reason, a high-grade filter media is used, the structure and composition of which meet the filtering requirements, even in high humidity and at high temperatures.

The filter paper is laid in narrow parallel pleats and fixed evenly in place by spacers made from profiled aluminium foil. The special spacer profiling with beaded edges on both sides prevents the filter paper from being damaged and gives the filter assembly maximum stability.

## Filter Casing

The filter casing is made from either:

- galvanised sheet steel, laminated chipboard or plywood without a flange (for insertion in airborne particulate filter cell mounting bank systems)
- galvanised sheet steel with a flange (for insertion in standard cell frames)

Construction:

K = fibre board; D = plywood;

Y = galvanised sheet steel with internal flange;

M = galvanised sheet steel

## Seal

Compact Fine Dust Filters without a flange are supplied with a flat profile gasket as standard; fine dust filters with a flange have no seal, since the standard cell frame is already fitted with one. The seal guarantees an air-tight junction between the filter casing and mounting frame.

## Filter Media Data

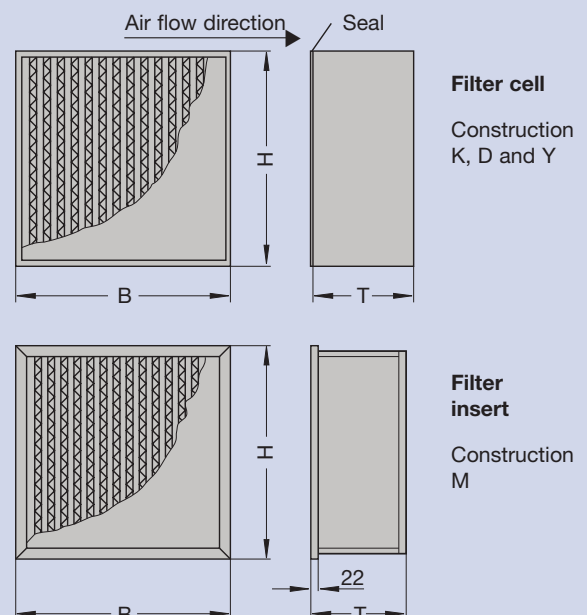
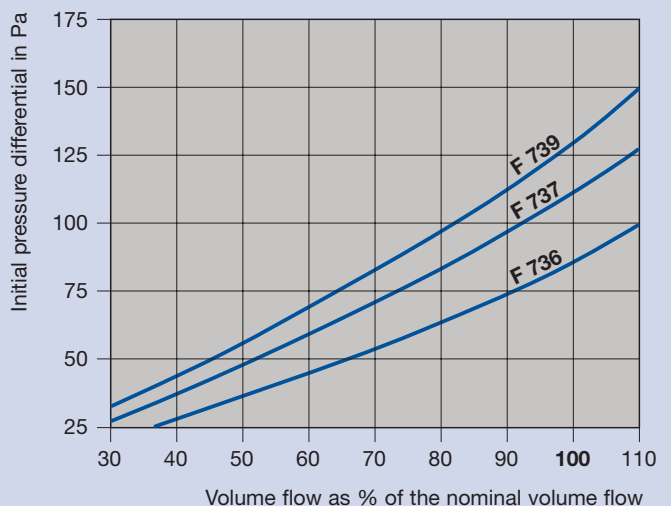
Filter Type	F736	F737	F739
Filter class to EN 779	F6	F7	F9
Average atmospheric dust spot Efficiency in %	65	85	95
Initial pressure differential at nominal volume flow in Pa	85	110	130
Final recommended pressure diff. in Pa		450	
Max. operating temperature in °C		120	
Max. relative humidity in %		100	
Construction code (metal casing with single flange)	M <sup>1)</sup>	M <sup>1)</sup>	M <sup>1)</sup>
Construction code (smooth-sided wood or metal casing)	W, D or Y	W, D or Y	W, D or Y

<sup>1)</sup> with galvanised protective grille on the supply air side.

## Table of Dimensions

Code Number	Dimensions in mm (without seal)			Nominal volume flow		Weight appr. in kg
	B	H	T	in l/s	in m <sup>3</sup> /h	
<b>Construction K, D and Y</b>						
12	305	305	150	140	500	13.5
37	287	592	150	260	950	5.0
16	592	592	150	530	1900	8.0
01	305	610	150	280	1000	5.0
02	610	610	150	560	2000	8.0
52	287	592	292	470	1700	7.0
54	592	592	292	940	3400	14.0
21	305	610	292	500	1800	8.0
03	610	610	292	1000	3600	15.0
04	762	610	292	1250	4500	18.0
<b>Construction M</b>						
37	287	592	150	260	950	5.0
16	592	592	150	530	1900	8.0
52	287	592	292	470	1700	6.0
54	592	592	292	940	3400	13.0

All volume flow figures in l/s are rounded off, then converted to m<sup>3</sup>/h. Weights are given net excluding packing; weight per packing unit approx 2 kg.

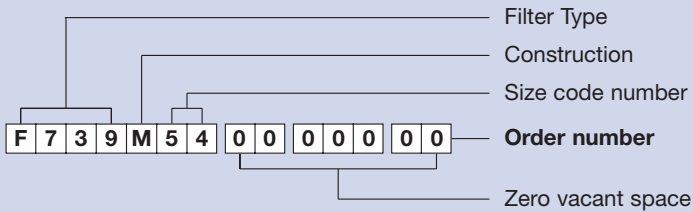


# Order Details

## Order Code

### Compact Fine Dust Filter

- Filter class F9 to EN 779
- Filter casing made from galvanised sheet steel
- With single flange
- Dimensions 592 x 592 x 292 mm
- Volume flow 940 l/s (3400 m<sup>3</sup>/h)



## Specification Text

Item	Qty.	Description
		<p><b>Trox Compact Fine Dust Filter</b></p> <p>consisting of: galvanised sheet steel /with or without a flange or protective grille), laminated chipboard or plywood.</p> <p>Filter media made from high-grade glass fibre paper with profiled aluminium foil spacers.</p> <p>Compact Fine Dust Filter, tested to EN 779, are packed for transportation in strong, damage-resistant cartons.</p>
		<p><b>Technical Data:</b></p> <p>Dimensions B x H x T _____ mm</p> <p>Nominal volume flow _____ l/s (m<sup>3</sup>/h)</p> <p>Initial pressure differential _____ Pa</p> <p>Filter class to EN 779 _____</p> <p>Average efficiency _____ %</p> <p>Max. operating temperature _____ °C</p> <p>Max. relative humidity _____ %</p> <p>Net weight _____ kg</p> <p>Order number _____</p> <p>Manufacture: Trox</p>
		Unit price